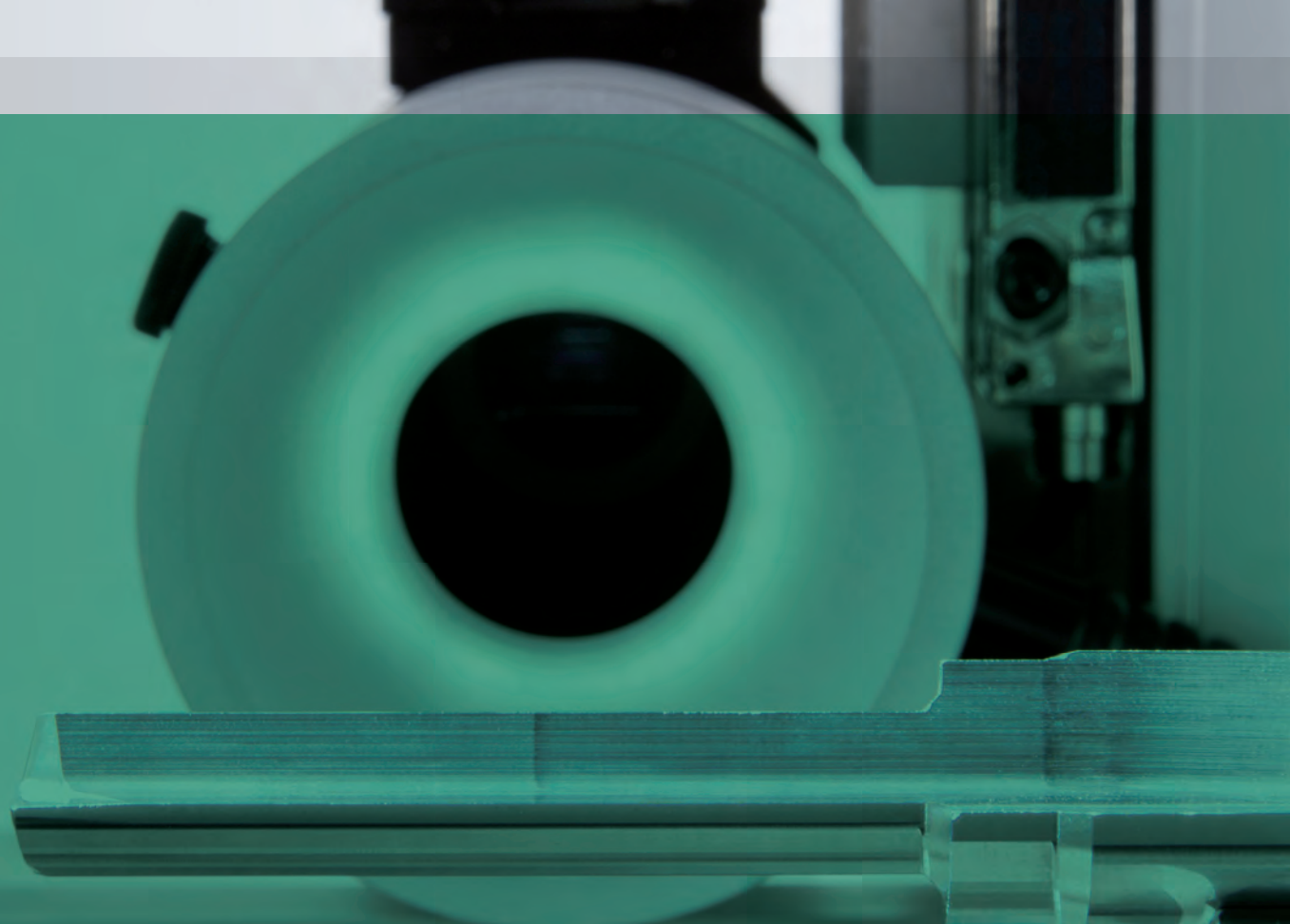


BLICKLE

MULTICHECK .17




BLICKLE MEASUREMENT EQUIPMENT: SIMPLY PRACTICAL, INSPIRINGLY PRECISE.



BLICKLE measurement
technology offers you
impressive advantages:
ease of use, efficiency,
and amazing customisation!

PRECISION PER SE IS NOT SUCH AN UNUSUAL FORTE,
BUT OUR FORTE IS PRECISION MEASUREMENT TECHNOLOGY
YOU CAN IMMEDIATELY USE WITH EASE, TAILORED TO
MEET YOUR SPECIFIC NEEDS, AND SERVING YOU
FOR A VIRTUALLY UNLIMITED LIFESPAN.




Our customers particularly value the sophisticated interaction of our know-how, experience, and technology. Therefore, you can measure us against our claim of being able to provide you with anything you don't find here – be it additional features for measurement devices, customised swivelling fixtures, or completely new solutions – in made-to-measure form. So, if you'd like to find out details about the customisation potential of our measurement equipment, we look forward to discussing them with you.

As a generalist we cover the whole gamut of measurement technology – and as a specialist we generate important value-added for metal processing companies in the automotive industry, mechanical engineering and tooling operations, as well as for providers of regrounding services.


Product breadth at BLICKLE meets with remarkable product depth because we develop measurement technology for our own needs as well. Obviously, the technology we use ourselves has to live up to our own high standards. When, decades ago, there was no suitable measurement technology available on the market for the two additional pillars of our business, our in-house tooling and mechanical engineering units, we developed it ourselves. In spite of all changes, improvements, and the wealth of resulting variants three key requirements have remained the same to this day: BLICKLE measurement technology is easy to operate, absolutely user-friendly, immediately ready, extremely durable, and practically 'unbreakable'.

Would you like having to re-measure your equipment to verify its continuing precision? Because you probably wouldn't, our products come with a wealth of detailed features built in that are hard to find elsewhere. We thus provide our customers with first-rate, reliable technology, and good value for money that allows you to optimally master the growing challenges of the marketplace. More than 150 employees, from our apprentices to our highly skilled specialists, are dedicated to achieving these aims day in day out: with 'Swabian' thoroughness and innovative prowess – and consistently fair practices, a global presence, and the special commitment of an owner-managed company with a long tradition.



Our support is another
calculable quantity
we don't mind being
measured against!

RETROFITS, COMMISSIONING, CALIBRATIONS,
OR THE SERVICE HOTLINE – OUR SUPPORT PUTS OUR
CUSTOMERS AT EQUAL EASE AS THE OPERATION
OF OUR EQUIPMENT.



A producer of measurement technology like BLICKLE, whose equipment is not subject to lifecycles if properly handled and maintained, is subject to high customer expectations as well. Our customers' trust in first-rate technology has become as natural to us as the dependable support we deliver even prior to selling: you define your specific requirements and we'll develop the appropriate solution. For decades, this has resulted in innovative components which keep enhancing our product range. These products, in turn, lead to programmes, systems, and devices that expand your options beyond having to strictly rely on measurement results – you can visualise them on a monitor by means of a camera, make parameters transparent as part of required-actual comparisons, and alter them to achieve even better solutions, or discuss approaches in front of the monitor with your colleagues. BLICKLE measurement devices are not so easy to compare because they offer you various advantages – such as ...

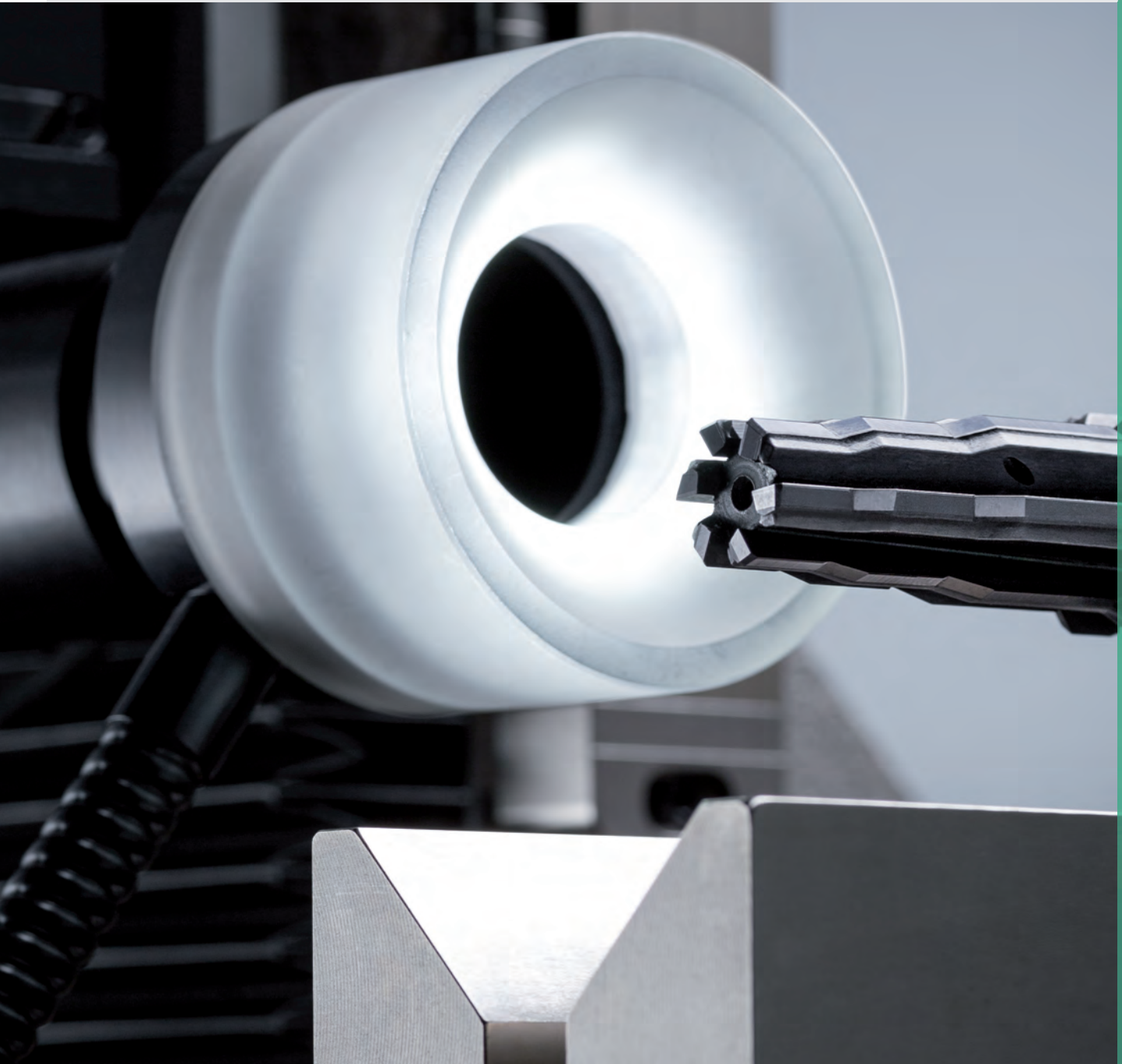
- **Precision,**
- **Stiffness, as well as a**
- **Wide range of options – the software zoom with an 800-fold resolution, for instance, makes diameters up to 0.002 mm feasible, while higher resolutions enable even smaller diameters**

with extreme ease of use.

On-site instructions by our technicians ensure a smooth process of taking your new equipment into operation. In case of subsequent questions our service hotline will promptly assist you. And because our customers are typically QM-certified, and thus depend on maximum precision, we'll calibrate and certify the devices for you at the prescribed intervals. This includes putting the machines into a state that allows them to be calibrated and to clean the high-precision mechanical components to make them fit again.

Speaking of fitness: Our retrofitting service will be pleased to upgrade your robust and durable BLICKLE measurement equipment. As a result, you'll benefit from a continuing return on your investment through state-of-the-art technology and quality that requires only minimal maintenance. And the best part about it is the perfection we've built into our products with high user friendliness in mind: a wide range of features, additional components, as needed, and easy operation enable your teams to work with BLICKLE equipment quickly, smoothly, and with high efficiency.

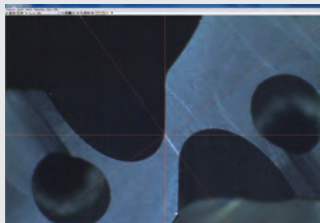
MULTICHECK PC 500 G2



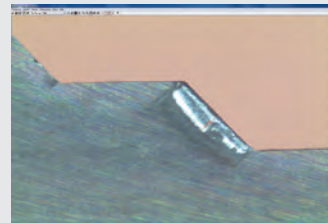
Length/angle/radii measurement



Face geometry measurement



Cutting edge/wear measurement



The central message: “Suitable for physical test labs due to maximum accuracy”

This universal device scores with maximum accuracy and an extremely rugged construction. Any type of drill, milling-cutter, countersink, reamer, profile steel, or clamped tool can be measured by this computer-aided, optoelectronic system in a contactless process. Ideally suited for intermediate, final or inbound inspections in the production of metal cutting tools, it is used by nearly all renowned manufacturers.

PC 500 is suitable for use in shop operations for small to large metal cutting tools, whereas PC 500 G2 is used in less dirt-prone areas (such as physical test labs). Furthermore, the high-resolution optics with automatic zoom make it one of the most precise and convenient machines in its class. In addition, it offers a vast array of customisable features. Particularly worth mentioning is the possibility of running ‘required-actual comparisons’ and ‘what if analyses’ with modified parameters, which makes the system an intelligent companion in all areas of optimised production operations. At the same time, it retains its fortes of minimal maintenance, easy operation, and flexible handling.

Specifications

Stone slab 400 x 630 x 80 mm
Range of measuring length 150 x 150 mm
Measurable diameter depending
on holding fixture up to 120 mm
Zoom lense 12x zoom
20/30/40/60/90/120/150/180/210
Camera 1/2 inch USB
Software Multicheck
Computer (win7*), display, mouse, keyboard



Features of our self-explanatory measuring software

Any kind of length, angle and radius measurement
Edge honing and wear measurement
Automatic edge sensor
Masks for use as profile projector
(import of DXF-files possible)
Resolution 2048 x 1536 pixels (measuring accuracy 0.001 mm)
Generation of inspection reports (data export into
MS Word® and MS Excel® possible)
Digital images - prints in photo quality

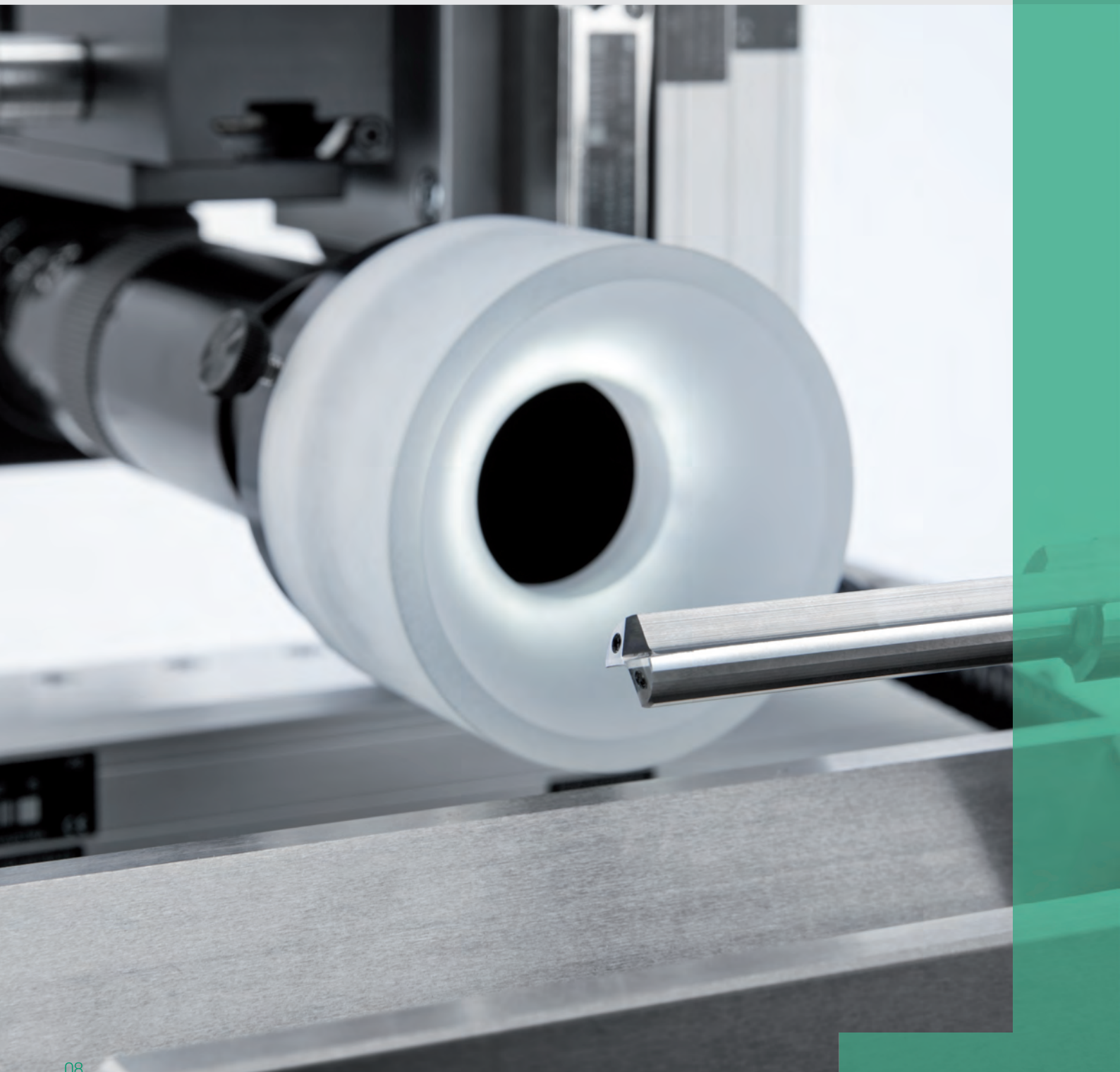
Recommended accessories

Swivelling take-up prism, moveable table,
Insertion v-blocks, halogen lamp with dimmer,
Fibre light lamp

Optional accessories

Multifunctional v-blocks, universal clamping device
SK40/SK50 and HSK

MULTICHECK MC 3 PC



You can look at things from any angle: the camera perspective enhances your vision

Compact, convenient, and computer-aided – this is how the advantages of this measurement system for small to medium sized metal cutting tools that is suitable for use in shop operations can be put in a nutshell. In addition, Multicheck MC3-PC is an ideal partner for intermediate, final or inbound inspections in the production process of precision tools, because measurement results can be transparently analysed and optimised.

The diversity of the zoom options in particular make complete cross-checks of all dimensions and cutting geometries possible – while allowing the relevant measurements to be logged. We combine the advantages of the BLICKLE measurement programme with a camera system – allowing challenging issues to be analysed and possible solutions to be discussed. Particularly this cross-checking of the contactless measurement results enables optimised production processes. Furthermore, MC3-PC offers the typical BLICKLE advantages: useful, customisable features, extensive accessories, easy operation, speed and flexibility.

Specifications

Stone slab 500 x 300 x 80 mm
Range of measuring length 125 x 75 mm
Measurable diameter depending on
holding fixture up to 50 mm
Measurable length 125 mm
Zoom lens 12x zoom
20/30/60/90/120/150/180/210
Camera 1/2 inch USB
Software Multicheck
Computer (win7[®]), display, mouse, keyboard



Features of our self-explanatory measuring software

Any kind of length, angle and radius measurement
Edge honing and wear measurement
Automatic edge sensor
Masks for use as profile projector (import of DXF-files possible)
Solution 1280 x 960 pixels (measuring accuracy 0.005 mm)
Generation of inspection reports (data export into
MS Word[®] and MS Excel[®] possible)
Digital images - prints in photo quality

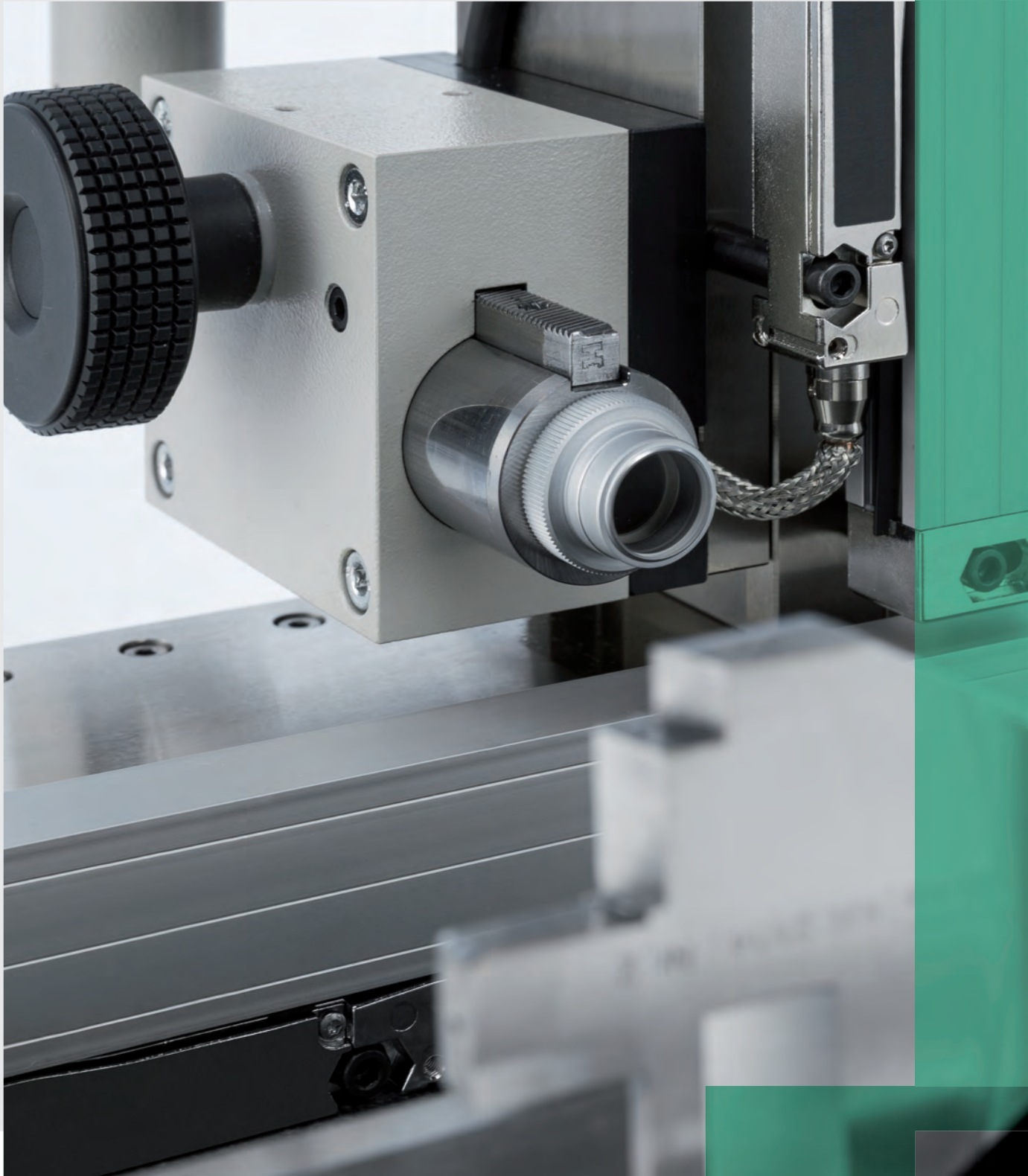
Recommended accessories

Swivelling take-up prism, moveable table with multiple socket
outlet and wiring included, insertion v-blocks,
halogen lamp with dimmer, fibre light lamp

Optional accessories

Multifunctional v-blocks

MULTICHECK MC3



Not only entry-level users in the regrinding business seek to be at the cutting edge of precision

The base equipment of the Multicheck series provides you with everything you need for measurement work directly on the machine or workstation (acc. to DIN EN ISO 9001): all the relevant parameters can be measured with the precision required by shop operations – without any dirt-sensitive components but with all the advantages that are typical for BLICKLE: useful, customisable features, extensive accessories, easy operation, speed and flexibility.

Our centring microscope combined with a 3-axis digital readout unit is a special highlight of this optical/optoelectronic measurement system for contactless and efficient measurement of small and medium-sized metal cutting tools.

Specifications

Stone slab 500 x 300 x 80 mm
Range of measuring length: 125 x 75 mm
Measurable diameter depending on holding fixture up to 50 mm
Measurable length 125 mm
Isoma microscope with rev transmitter
10 x 25 x image enlargement
3-axis digital readout



Recommended accessories

Swivelling take-up prism, moveable table with multiple socket outlet and wiring included, insertion v-blocks, halogen lamp with dimmer, fibre light lamp

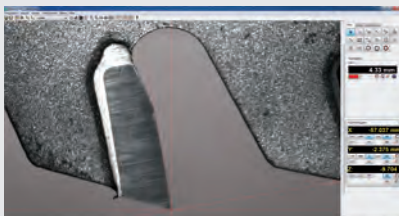
Optional accessories

Multifunctional v-blocks

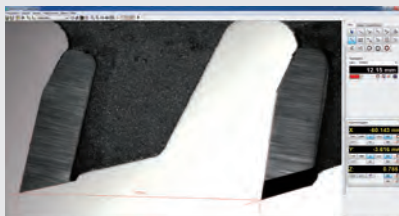
MULTICHECK SB 600 G2



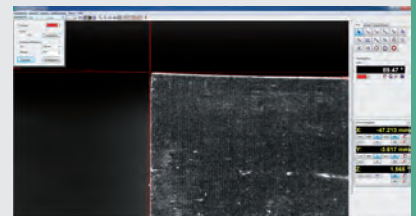
Angle measurement



Tooth spacing measurement



Radial relief angle measurement



A well-rounded thing and the measure of all things for saw blade measurements

From HSS and HM, to VHM and/or PCD tipped circular saw blades – our Multicheck SB600 G2 enables contactless computer-aided measurements using optoelectronics. Its reliability and vast array of functions have made this measurement system a classic – particularly with renowned producers of and regrinding operations for saw blades (inbound inspections) as well as companies in the metal and woodworking industries.

The SB600 G2 allows you to measure blade geometries (incl. radial relief angles), concentric/plane running, and wear spots, enhanced by a special feature: the measurement optics can be shifted into three different measuring positions. As a result, all the key cutting angles and dimensions are efficiently measurable in a one-step process of setting up the saw blade. The work piece is held by a magnetic clamping plate that is available with the option of exchangeable reducing sleeves for easy adaptation to the saw blade's bore diameter.

Specifications

Diameter of the measuring range 100 - 750 mm
Vertical range: 15 mm
Zoom lens, 12x zoom
25/40/80/120/160/200/250/290
Camera 1/2 inch USB
Software WMS (multicheck)
Computer (win7*), display, mouse, keyboard



Recommended accessories

Moveable table, halogen lamp with dimmer,
fibre light lamp with focusing

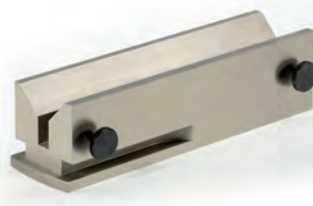
ACCESSORIES

Drawing on a wealth of experience entails the know-how of being able to offer you a vast array of extensions as part of our range of accessories. Be it optical lighting equipment, detailed viewing angles, proprietary diffusor developments, or moveable tables – we aim to make your work flexible, efficient, and successful using our knowledge. Here's an overview of 'essentials' that we're sure would make your work easier:

MULTICHECK PC 500 G2 · MC 3 PC · MC 3 ACCESSORIES



Swivel v-block for PC500, length 300 mm



Swivel v-block for MC3, length 250 mm



V-block inserts, length 60 mm



Multi-functional v-blocks, length 60 / 30 mm

Hard-metal stop



Centre supports, centre height for PC500 150 mm; for MC3 75 mm



Universal clamping device



Base plate, length 700 mm



Interchangeable lenses for MC3 (5 x and 50 x magnification)



Ring light with cold-light source



Halogen swivel lamp



MULTICHECK SB 600 G2 ACCESSORIES




Moveable table, fits all models, incl. complete electrical wiring. For PC versions, PC is fixed to table. Length 1,500 mm, width 750 mm, height 840 mm, connecting line 5 m



Ring light with cold-light source

Subject to errors and to technical changes as part of product improvement.

BLICKLE



BLICKLE Werkzeuge GmbH & Co. KG
Gammertinger Strasse 30 - 72419 Neufra - Germany
Phone +49 (7574) 404-0 - Fax +49 (7574) 404-80
werkzeuge@blickle-tools.de - www.blickle-tools.de

MEASUREMENT TECHNOLOGY - METAL CUTTING TOOLS - SPECIAL MECHANICAL ENGINEERING
ZERSpanungswerkzeuge - Sondermaschinen - Messtechnik